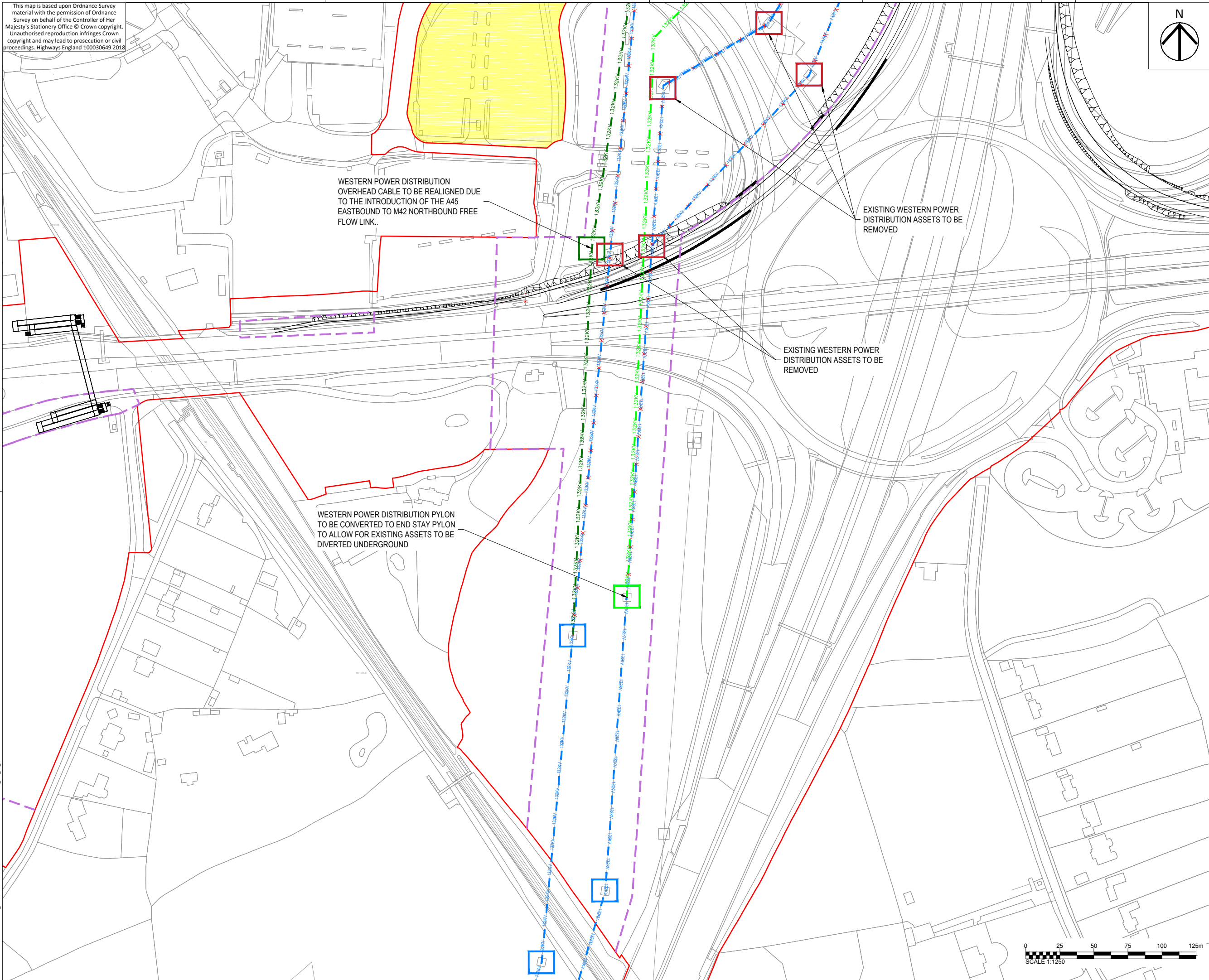


This map is based upon Ordnance Survey material with the permission of Ordnance Survey on behalf of the Controller of Her Majesty's Stationary Office © Crown copyright. Unauthorised reproduction infringes Crown copyright and may lead to prosecution or civil proceedings. Highways England 100030649 2018



- NOTES**
1. THIS DRAWING IS TO BE READ IN CONJUNCTION WITH ALL OTHER RELEVANT DOCUMENTATION.
 2. DO NOT SCALE FROM THIS DRAWING. USE ONLY PRINTED DIMENSIONS.
 3. ALL DIMENSIONS IN METRES, ALL CHAINAGES, LEVELS AND COORDINATES ARE IN METRES UNLESS OTHERWISE DEFINED OTHERWISE.

- LEGEND**
- LIMITS OF LAND TO BE ACQUIRED OR USED PERMANENTLY OR TEMPORARILY (THE ORDER LIMITS)
 - LIMITS OF LAND TO BE TEMPORARILY ACQUIRED FOR SIGNAGE INSTALLATION LAND NOT INCLUDED WITHIN THE ORDER LIMITS
 - WESTERN POWER DISTRIBUTION EXISTING PYLON
 - 132KV WESTERN POWER DISTRIBUTION EXISTING 132KV OVERHEAD CABLE
 - 132KV WESTERN POWER DISTRIBUTION EXISTING 132KV OVERHEAD CABLE TO BE DISCONNECTED
 - WESTERN POWER DISTRIBUTION PYLON TO BE REMOVED
 - WESTERN POWER DISTRIBUTION PROPOSED END STAY PYLON
 - 132KV WESTERN POWER DISTRIBUTION 132KV PROPOSED UNDERGROUND DIVERSION
 - WESTERN POWER DISTRIBUTION PROPOSED PYLON
 - 132KV WESTERN POWER DISTRIBUTION 132KV PROPOSED OVERGROUND DIVERSION
 - - - UTILITY LIMITS OF DEVIATION

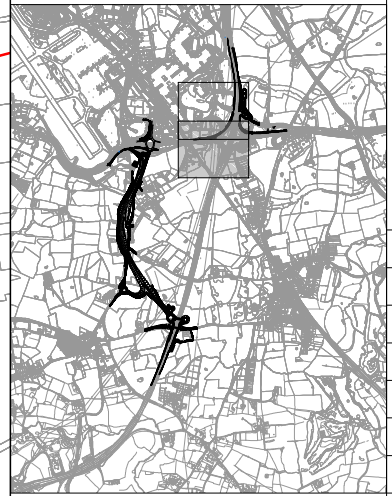


WESTERN POWER DISTRIBUTION OVERHEAD CABLE TO BE REALIGNED DUE TO THE INTRODUCTION OF THE A45 EASTBOUND TO M42 NORTHBOUND FREE FLOW LINK..

EXISTING WESTERN POWER DISTRIBUTION ASSETS TO BE REMOVED

EXISTING WESTERN POWER DISTRIBUTION ASSETS TO BE REMOVED

WESTERN POWER DISTRIBUTION PYLON TO BE CONVERTED TO END STAY PYLON TO ALLOW FOR EXISTING ASSETS TO BE DIVERTED UNDERGROUND



NOTE
THESE DIVERSION AND PROTECTION WORKS ARE ILLUSTRATIVE ONLY AND ARE SUBJECT TO FURTHER DESIGN DEVELOPMENT IN COLLABORATION WITH WESTERN POWER DISTRIBUTION.

First Issue	WC	19/12/18	C01
Revision Details	By	Date	Suffix
	Check		

DCO SUBMISSION

Client
Highways England
Floor 5
Two Colmore Square
38 Colmore Circus
B4 6BN



Development Consent Order Number
TR010027

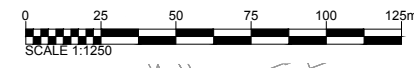
Project Title
M42 JUNCTION 6 IMPROVEMENT

Drawing Title
FIGURE 3.6 WESTERN POWER PROTECTION AND DIVERSION WORKS SHEET 1 OF 2

Designed	Drawn	Checked	Approved	Date
JCH	WC	JCH	LJB	19/12/18
Internal Project No.	Suitability			
60543032	D7			
Scale @ A1	Zone			
1:1250	M42			

THIS DOCUMENT HAS BEEN PREPARED PURSUANT TO AND SUBJECT TO THE TERMS OF AECOM'S APPOINTMENT BY ITS CLIENT. AECOM ACCEPTS NO LIABILITY FOR ANY USE OF THIS DOCUMENT OTHER THAN BY ITS ORIGINAL CLIENT OR FOLLOWING AECOM'S EXPRESS AGREEMENT TO SUCH USE, AND ONLY FOR THE PURPOSES FOR WHICH IT WAS PREPARED AND PROVIDED.

Highways England PIN	Originator	Volume	Rev
HE551485	-ACM	-EGN-	C01
Location	Type	Role	Number
M42_SW_ZZ_ZZ	-DR-DC-9000		



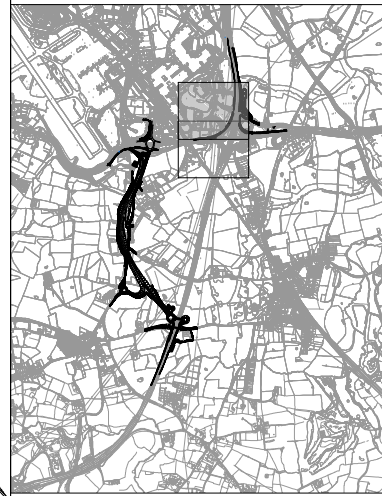
Plot Date: 19 December 2018 11:17:23
File Name: C:\P\WORKING\AECOM_E\UAMES\HEMINDWAY\00077009\HE551485\ACM_EGN\M42_SW_ZZ_DR-DC-9000

This map is based upon Ordnance Survey material with the permission of Ordnance Survey on behalf of the Controller of Her Majesty's Stationery Office © Crown copyright. Unauthorised reproduction infringes Crown copyright and may lead to prosecution or civil proceedings. Highways England 100030649 2018

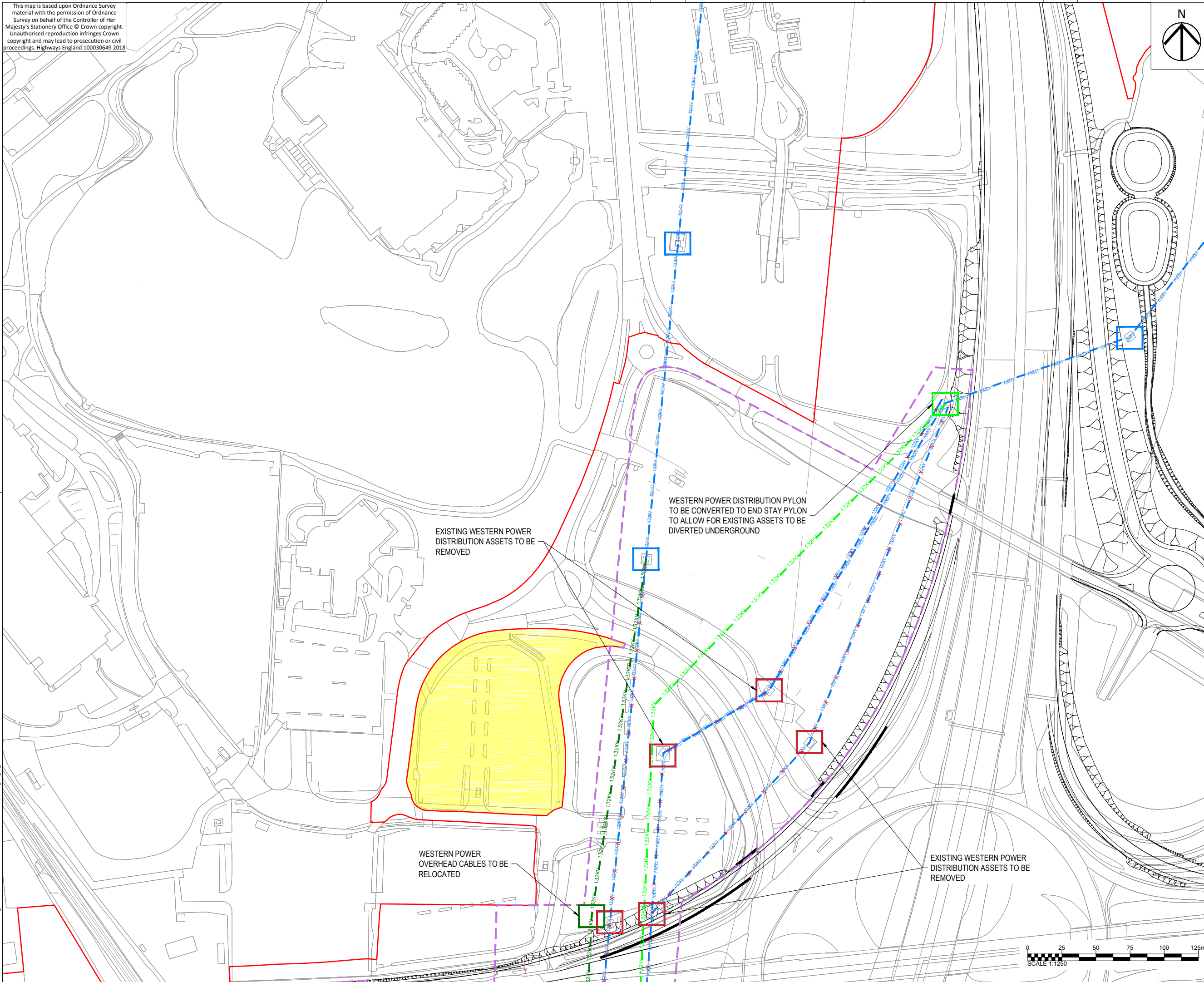


- NOTES**
- THIS DRAWING IS TO BE READ IN CONJUNCTION WITH ALL OTHER RELEVANT DOCUMENTATION.
 - DO NOT SCALE FROM THIS DRAWING. USE ONLY PRINTED DIMENSIONS.
 - ALL DIMENSIONS IN METRES, ALL CHAINAGES, LEVELS AND COORDINATES ARE IN METRES UNLESS DEFINED OTHERWISE.

- LEGEND**
- LIMITS OF LAND TO BE ACQUIRED OR USED PERMANENTLY OR TEMPORARILY (THE ORDER LIMITS)
 - LIMITS OF LAND TO BE TEMPORARILY ACQUIRED FOR SIGNAGE INSTALLATION LAND NOT INCLUDED WITHIN THE ORDER LIMITS
 - WESTERN POWER DISTRIBUTION EXISTING PYLON
 - WESTERN POWER DISTRIBUTION EXISTING 132KV OVERHEAD CABLE
 - WESTERN POWER DISTRIBUTION EXISTING 132KV OVERHEAD CABLE TO BE DISCONNECTED
 - WESTERN POWER DISTRIBUTION PYLON TO BE REMOVED
 - WESTERN POWER DISTRIBUTION PROPOSED END STAY PYLON
 - WESTERN POWER DISTRIBUTION 132KV PROPOSED UNDERGROUND DIVERSION
 - WESTERN POWER DISTRIBUTION PROPOSED PYLON
 - WESTERN POWER DISTRIBUTION 132KV PROPOSED OVERGROUND DIVERSION
 - UTILITY LIMITS OF DEVIATION



NOTE
THESE DIVERSION AND PROTECTION WORKS ARE ILLUSTRATIVE ONLY AND ARE SUBJECT TO FURTHER DESIGN DEVELOPMENT IN COLLABORATION WITH WESTERN POWER DISTRIBUTION.



First Issue	WC	19/12/18	C01
Revision Details	By	Date	Suffix
	Check		

DCO SUBMISSION

Client
Highways England
Floor 5
Two Colmore Square
38 Colmore Circus
B4 6BN



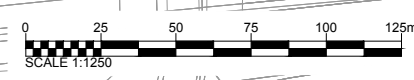
Development Consent Order Number
TR010027

M42 JUNCTION 6 IMPROVEMENT

FIGURE 3.6 WESTERN POWER PROTECTION AND DIVERSION WORKS SHEET 2 OF 2

Designed JCH	Drawn WC	Checked JCH	Approved LJB	Date 19/12/18
Internal Project No. 60543032	Suitability D7			
Scale @ A1 1:1250	Zone M42			

THIS DOCUMENT HAS BEEN PREPARED PURSUANT TO AND SUBJECT TO THE TERMS OF AECOM'S APPOINTMENT BY ITS CLIENT. AECOM ACCEPTS NO LIABILITY FOR ANY USE OF THIS DOCUMENT OTHER THAN BY ITS ORIGINAL CLIENT OR FOLLOWING AECOM'S EXPRESS AGREEMENT TO SUCH USE, AND ONLY FOR THE PURPOSES FOR WHICH IT WAS PREPARED AND PROVIDED.



Drawing Number HE551485 -ACM	Originator -EGN-	Volume -DR-DC-9001	Rev C01
Location M42_SW_ZZ_ZZ	Type 1	Role 1	Number 1

Plot Date: 19 December 2018 11:22:07
 File Name: C:\P\WORKING\DCOM\E\U\AMES\HEMINDWAY\0007\009HE551485\ACM\EM\M42_SW_ZZ_DR-DC-9001